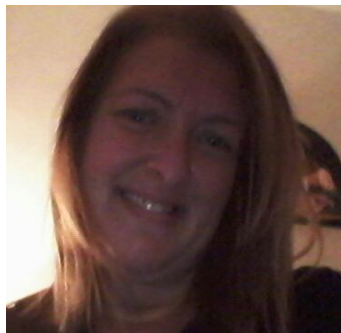


LLC Special edition

Guest editor: *Prof. Franca Daniele, MD*

Medical School, “G. d’Annunzio” University”,
Chieti, Italy

Email: fdaniele@unich.it



Topic: *New Insights into Special Languages*

Papers in the following academic disciplines are welcomed:

English Language Studies

Translation Studies

English for Specific Purposes

English Corpus Linguistics

English Language History

Communication studies

Submissions

Submit your paper as an attachment to contact@ijllc.eu,
ijllc.submission@yahoo.com or fdaniele@unich.it



Time Schedule

Submission Deadline:	July 30, 2022
Peer Review (First decision):	August 15, 2022
Revision by Authors:	September 15, 2022
Final Decision for Publication:	October 1, 2022
Publication of Special Issue:	November 15, 2022

Language: English

Peer Review Procedure

Double blind.

Publication Fee

To cover the operating costs, authors of the accepted papers will be required to pay 97 EUR per paper. Hard copies of the LLC special edition are included as part of the cost.

Overview of the Special edition

This first Special edition of the International Journal of Linguistics, Literature and Culture investigating the *New Insights into Special Languages* gives birth to a new phase of the Journal. Indeed, Special editions are the product of the work of scholars and researchers that meet under common and shared research interests, and this Special Issue is aimed at highlighting language in all its aspects and especially as a communication and an exchange tool in specialized and specific domains. Special languages involve language and communicative competence in a specific discipline. In this milieu, languages started to be addressed as domain-specific languages, micro-languages, special languages, specialized languages, etc. Special languages are medical language, legal language, financial and business language, tourism language etc.

What makes a language a language for specific purposes? Is it its particular terms or syntax? Do the teachers and receivers require particular expertise? Which are the methods used to teach ESP? These are some of the questions that will be investigated in this Special edition.

The papers in this Special edition can use a variety of research methods. The suggested themes include, but are not limited to the following:

1. Comparison of the language used in this coronavirus pandemic and other past pandemics in the history of human kind.
2. Language uses.
3. Language modifications.
4. Introduction of new terms.
5. Social media and their importance.
6. Communication changes.
7. Transmission of scientific medical knowledge to laypeople.
8. Management of academic communications by the medical scientific community.

Types of Manuscripts Acceptable

Research articles, review of literature, and conceptual framework